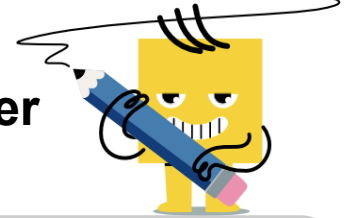
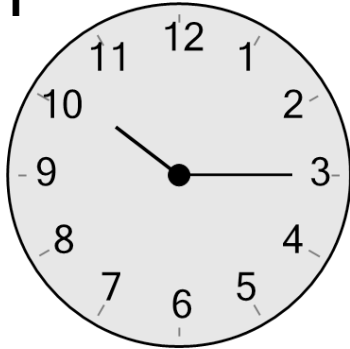




Time - Telling - Clock to Words - Quarter Hours

**1**

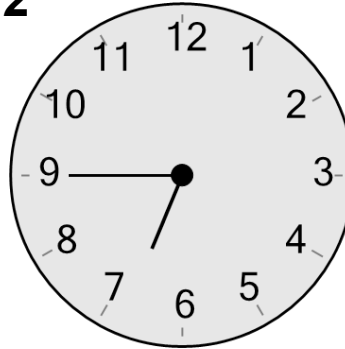
What time is shown on this clock?

A

six o'clock

B

quarter past ten

2

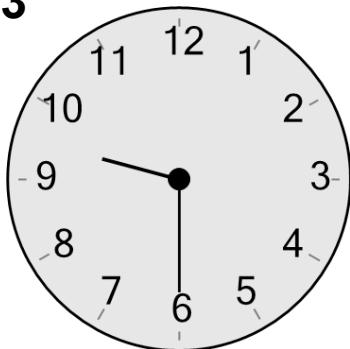
What time is shown on this clock?

A

quarter to seven

B

ten to three

3

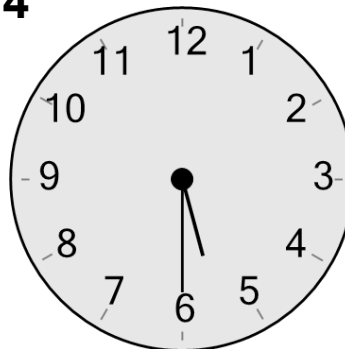
What time is shown on this clock?

A

half past nine

B

half past five

4

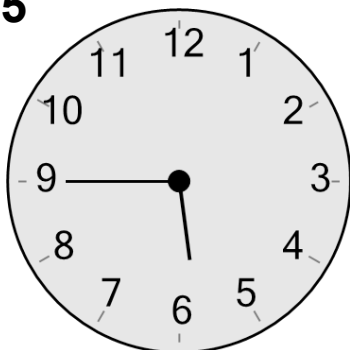
What time is shown on this clock?

A

half past five

B

ten to six

5

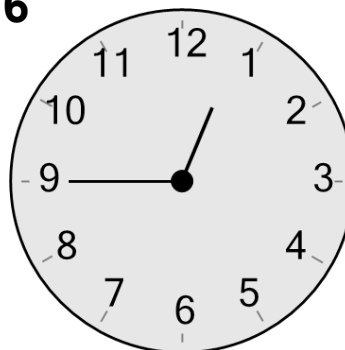
What time is shown on this clock?

A

half past six

B

quarter to six

6

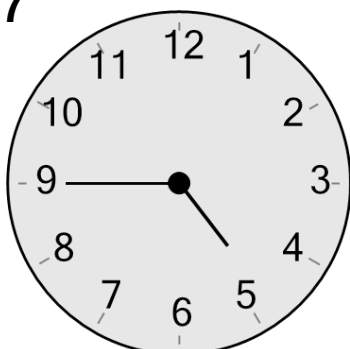
What time is shown on this clock?

A

quarter to one

B

five to one

7

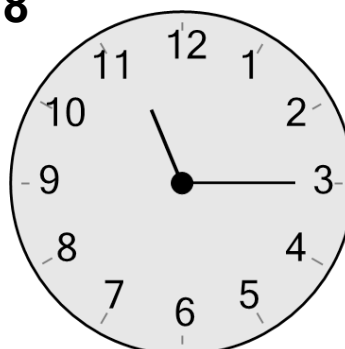
What time is shown on this clock?

A

half past one

B

quarter to five

8

What time is shown on this clock?

A

twenty-five to twelve

B

quarter past eleven