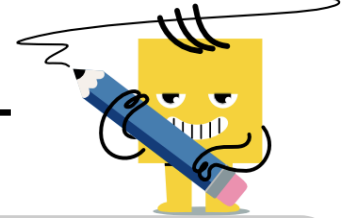


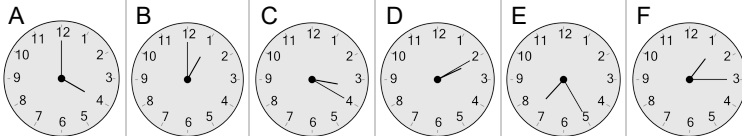


## Time - Telling - Words (Plain) to Clock - Full Hours



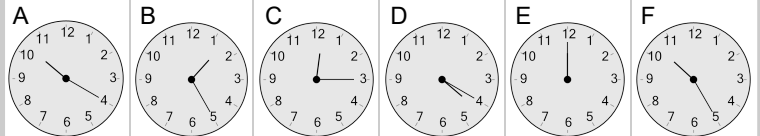
**1** Which clock shows the time indicated

four o'clock



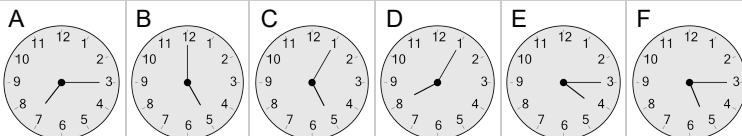
**2** Which clock shows the time indicated

twelve o'clock



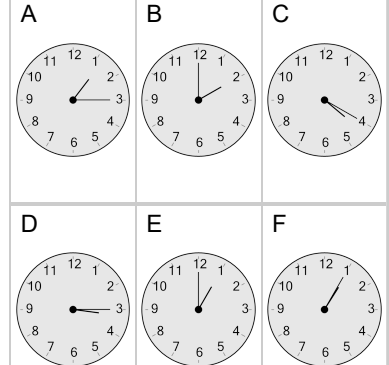
**3** Which clock shows the time indicated

five o'clock



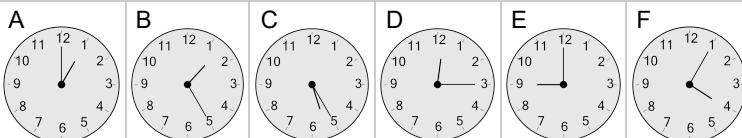
**4** Which clock shows the time indicated

one o'clock



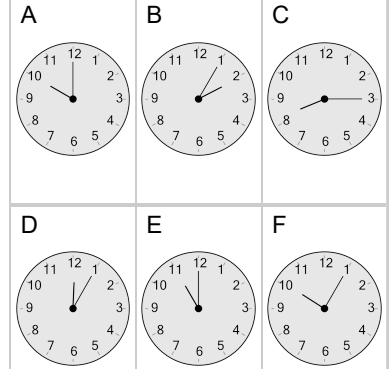
**5** Which clock shows the time indicated

nine o'clock



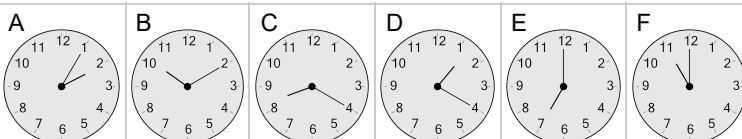
**6** Which clock shows the time indicated

ten o'clock



**7** Which clock shows the time indicated

eleven o'clock



**8** Which clock shows the time indicated

eight o'clock

