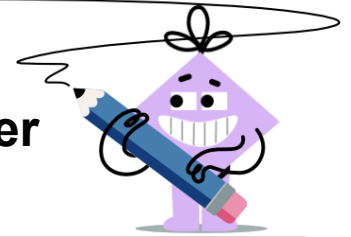


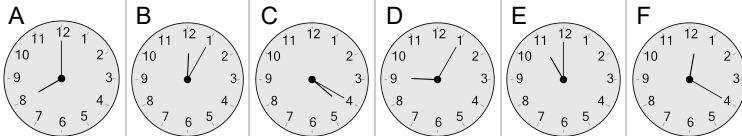


Time - Telling - Words to Clock - Quarter Hours



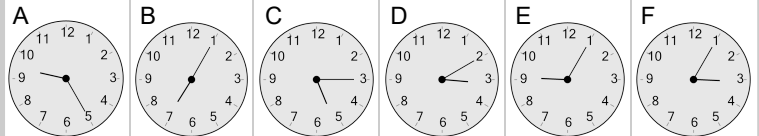
1 Which clock shows the time indicated

eight o'clock



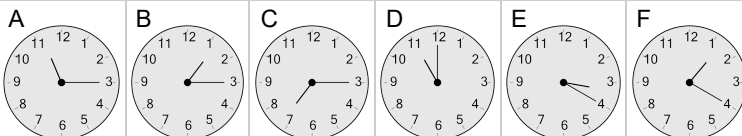
2 Which clock shows the time indicated

quarter past five



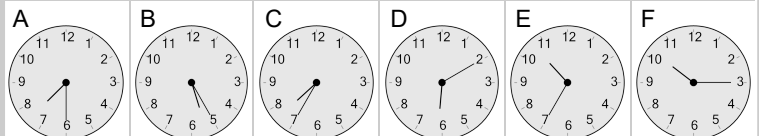
3 Which clock shows the time indicated

eleven o'clock



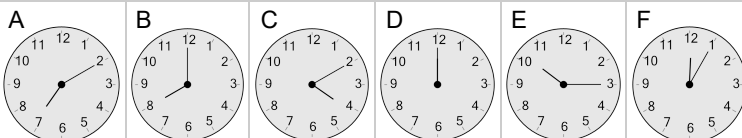
4 Which clock shows the time indicated

half past seven



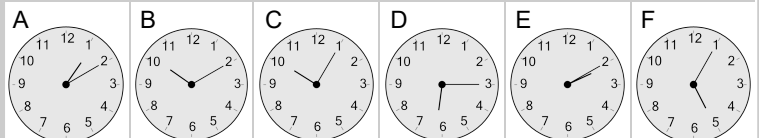
5 Which clock shows the time indicated

twelve o'clock



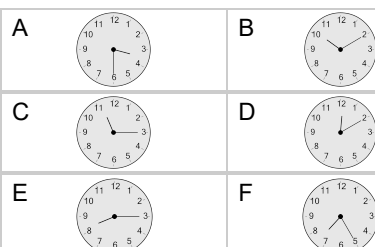
6 Which clock shows the time indicated

quarter past six



7 Which clock shows the time indicated

quarter past eleven



8 Which clock shows the time indicated

quarter past two

