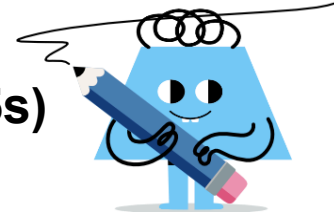




Trigonometry - Radians to Degrees (45s)



1

 π radHow many radians is this angle
($180^\circ = \pi$ radians)?

A

 225°

B

 180°

2

 $\frac{\pi}{2}$ radHow many radians is this angle
($180^\circ = \pi$ radians)?

A

 30°

B

 90°

3

 2π radHow many radians is this angle
($180^\circ = \pi$ radians)?

A

 360°

B

 330°

4

 $\frac{7\pi}{4}$ radHow many radians is this angle
($180^\circ = \pi$ radians)?

A

 330°

B

 315°

5

 $\frac{5\pi}{4}$ radHow many radians is this angle
($180^\circ = \pi$ radians)?

A

 240°

B

 225°

6

 $\frac{3\pi}{4}$ radHow many radians is this angle
($180^\circ = \pi$ radians)?

A

 180°

B

 135°

7

 $\frac{\pi}{4}$ radHow many radians is this angle
($180^\circ = \pi$ radians)?

A

 45°

B

 120°

8

 $\frac{3\pi}{2}$ radHow many radians is this angle
($180^\circ = \pi$ radians)?

A

 315°

B

 270°