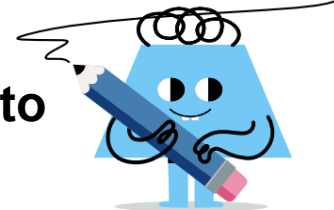




## Trigonometry, Unit Circle Coordinates to Angle (Degrees) (30s)



1

$$(0, -1)$$

How many degrees around the unit circle is this point?

A

270°

B

0°

2

$$\left(\frac{1}{2}, \frac{\sqrt{3}}{2}\right)$$

How many degrees around the unit circle is this point?

A

150°

B

60°

3

$$\left(-\frac{\sqrt{2}}{2}, -\frac{\sqrt{2}}{2}\right)$$

How many degrees around the unit circle is this point?

A

225°

B

135°

4

$$(1, 0)$$

How many degrees around the unit circle is this point?

A

360°

B

180°

5

$$(-1, 0)$$

How many degrees around the unit circle is this point?

A

180°

B

270°

6

$$\left(\frac{\sqrt{3}}{2}, -\frac{1}{2}\right)$$

How many degrees around the unit circle is this point?

A

210°

B

330°

7

$$\left(-\frac{1}{2}, \frac{\sqrt{3}}{2}\right)$$

How many degrees around the unit circle is this point?

A

45°

B

120°

8

$$\left(\frac{\sqrt{3}}{2}, \frac{1}{2}\right)$$

How many degrees around the unit circle is this point?

A

150°

B

30°