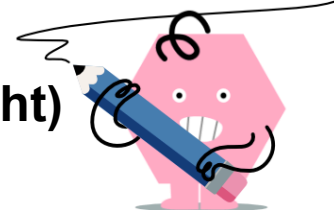
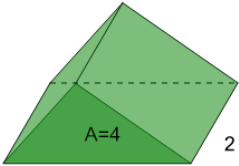
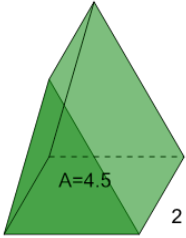
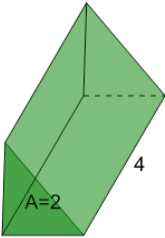
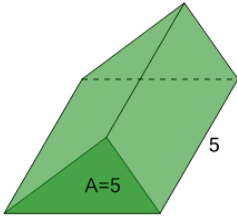
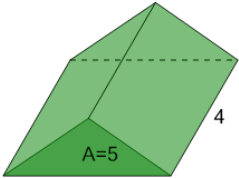
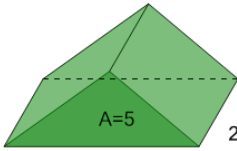
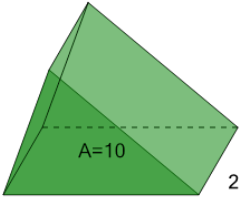
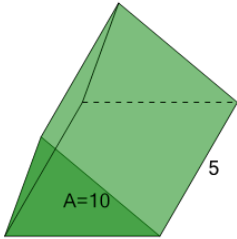




## Volume of a Triangular Prism (Non-Right) - Calculate from Base Area



<b>1</b> What is the volume of this Triangular Prism? 	A 6	B 4	C 9.5	<b>2</b> What is the volume of this Triangular Prism? 	A 7	B 13	C 8
	D 8	E 6.5	F 8.5		D 7.5	E 11.5	F 9
<b>3</b> What is the volume of this Triangular Prism? 	A 10	B 9.5	C 4	<b>4</b> What is the volume of this Triangular Prism? 	A 27.5	B 47.5	C 35
	D 8	E 8.5	F 11.5		D 15	E 40	F 25
<b>5</b> What is the volume of this Triangular Prism? 	A 38	B 32	C 18	<b>6</b> What is the volume of this Triangular Prism? 	A 15	B 2	C 18
	D 26	E 4	F 20		D 3	E 12	F 10
<b>7</b> What is the volume of this Triangular Prism? 	A 36	B 30	C 20	<b>8</b> What is the volume of this Triangular Prism? 	A 35	B 60	C 75
	D 14	E 4	F 12		D 20	E 15	F 50